

ACCESS Joint Committee

Date: 9 December 2019

Report by: Officer Working Group

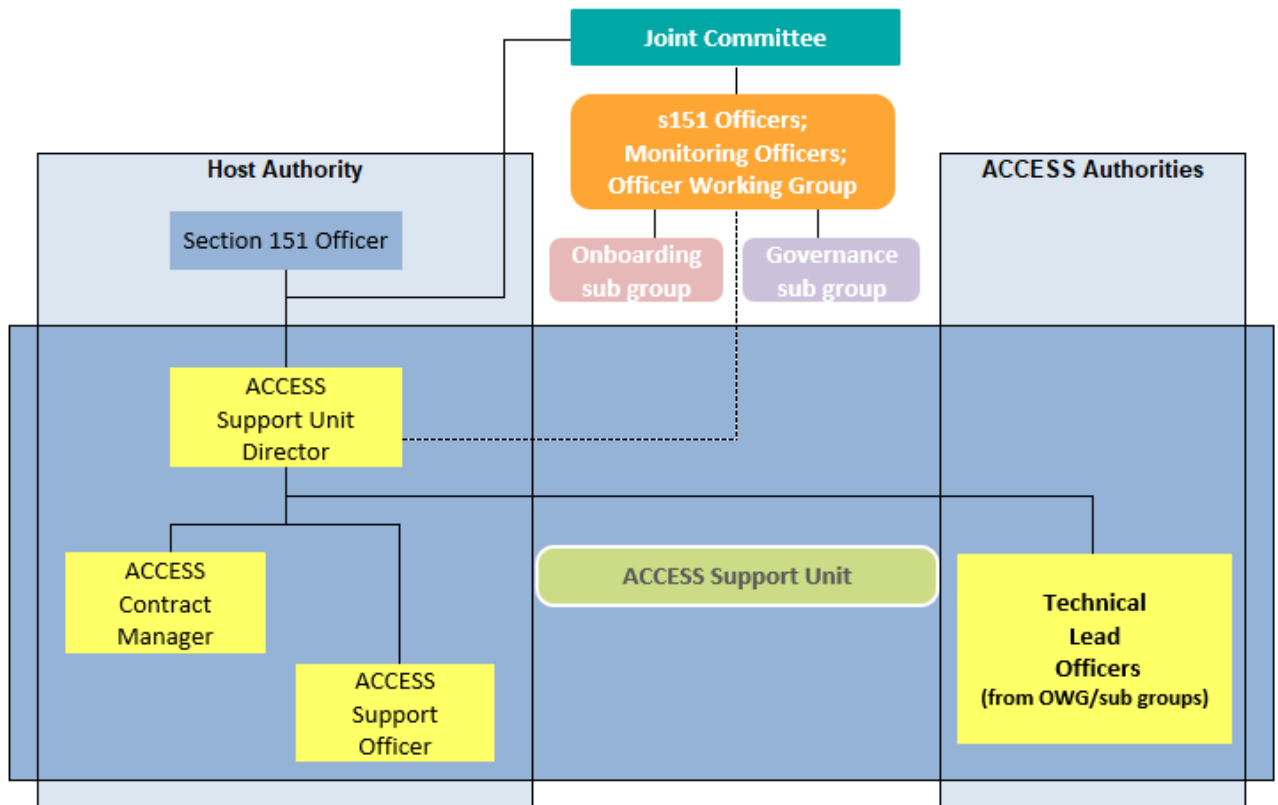
Subject:	ACCESS Support Unit (ASU)
Purpose of the Report:	To provide an updated overview of the ACCESS Support Unit (ASU)
Recommendations:	The Joint Committee (JC) are asked to: <ul style="list-style-type: none">• Note the updated overview of the ACCESS Support Unit.
Enquiries to:	Names – Kevin McDonald E-mail – kevin.mcdonald@accesspool.co.uk

1. Purpose

1.1. The purpose of this report is to provide an updated overview of the ACCESS Support Unit (ASU).

2. Background

2.1. At its meeting on 9 September 2019 the Joint Committee (JC) received a report which included the ASU structure chart shown below.

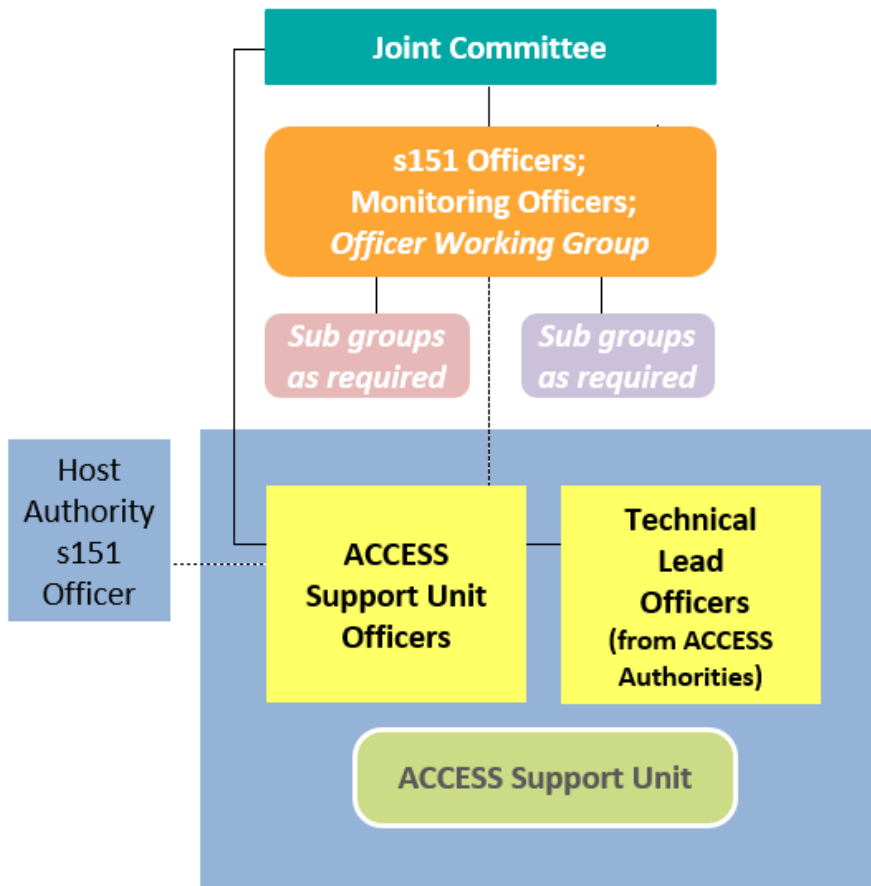


2.2. At the meeting it was suggested that changes be made to presentation of the chart that would better reflect the reporting relationship between the ASU and the Joint Committee.

3. Updated structure chart

3.1. The comments made at the last meeting have been considered by Officer Working Group.

3.2. A revised version of the structure chart is shown overleaf.



3.3. On behalf of the ACCESS Authorities, the Host Authority is employer for the full time ACCESS Support Unit staff, and the Host s151 Officer has line management responsibilities for the Interim ACCESS Support Unit Director. In all other respects the Host Authority s151 Officer fulfils the same role as the s151 Officer at each of the other ACCESS Authorities.

4. Recommendations

4.1. The Joint Committee notes the revised structure chart.